



# JOURNEY TO DREAM



2022/2023 Annual Report

# A MESSAGE FROM THE CEO

NESA GRIDER

I wanted to take a moment to share with you the burning "why" that fuels my unwavering passion for supporting the population of youth we serve. It's not just a passing interest or a fleeting desire – it's a fire deep within my heart that drives me to make a difference in the lives of these incredible teens.

Without a doubt, the world can be a wonderfully inviting place, but it also can be an unjust place, and it crushes my soul to see how circumstances beyond their control hold back some of our brightest and most promising youth. Every teen counts. Every teen deserves a fair shot at success, regardless of their background, economic status, or the challenges they face.

Regardless of where they come from, every young person possesses abundant untapped potential. We can help them discover their strengths, passions, and unique gifts by offering them the proper support, guidance, and opportunities. Imagine the incredible transformations and achievements when we invest in their growth.

Underserved youth are not just the future – they are the present too. By equipping, empowering, and embracing them today, we are shaping a brighter, more inclusive future for our communities and the world. When we provide them with the tools they need to succeed, we're not just changing individual lives but creating a ripple effect that will touch countless others.

I share my "why" with you to express my passion and invite you to join me on this incredible journey. Together, we can uplift and empower underserved youth, giving them the opportunities they deserve. Whether through mentorship, volunteering, or donations, every contribution matters; THEY matter.

Be the change we wish to see in the world. Be the guiding light that helps these young stars shine their brightest.



# 2022/2023 POINTS OF SERVICE: 23,347



NIGHTS OF SLEEP:  
**6,109**



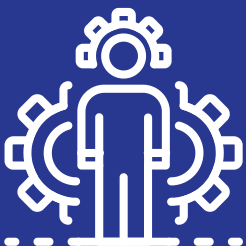
MEDICAL:  
**1,259**



TRANSPORTATION:  
**5,019**



MEALS:  
**5,412**



LIFESKILLS:  
**5,548**

**Since opening our doors in February 2017, Kyle's Place has provided more than 137,264 services.**

Often referred to as the forgotten population, youth homelessness is on the rise. Teens 14 - 19 are the nation's invisible at-risk, most victimized, and undercounted population. Our 2022-2023 service numbers speak volumes about this growing population and the ongoing need for support.



# 2023 EDUCATIONAL HIGHLIGHTS

Taylor found his forever home while at Kyle's Place. His adoption influenced his mother to start a law firm that offers family law services for adoption and representation of youth in care. Taylor is a first generation college student and the oldest of 2.

Darren met his forever family and transitioned to his forever home after receiving intensive substance abuse services, following a recommendation from Kyle's Place. After he left rehab, his forever home saw his growth and moved forward with adoption. Darren is a first generation college student.

Chloe moved from Kyle's Place to live with fictive kin and returned to the DFW area where she created a large support system during her 2 1/2 years at Kyle's Place. Chloe is a first generation college student, the only sibling to attend college, and the youngest of 6.

Connor is a first generation college student. His parents were teen parents and incarcerated most of his life. He made it his goal to graduate college with a diploma instead of a GED. He never thought he would make it this far, but look at him soar.

Hunter is a first generation college student. He is extremely talented and made the Midwestern State University cheer team. Hunter always wanted to cheer, but due to the cost, never had the opportunity in previous placements. Hunter taught himself how to tumble. Due to his talent, Hunter made the LHS Varsity Cheer team and received a scholarship for tumbling lessons through Excite! Gym.

Morgan met her forever parents while at Kyle's Place. Her placement and subsequent adoption motivated her mother to start writing a book on teen adoptions. Morgan is in the Radiology Technician program at NCTC, and is a first generation college student.



# OUR MISSION

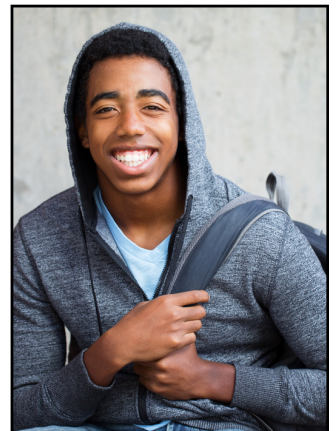
Journey to Dream (JTD) embraces, equips, and empowers at-risk, victimized, and homeless teens to overcome adversity and live purposeful lives. JTD offers a full breadth of services to a growing population of at-risk, victimized, and homeless youth with education, counseling, providing basic life needs and safe shelter while empowering them with positive coping/life skills, to become self-sufficient, productive, independent, and successful adults.

# CORE VALUES

Our core values, passion, vision, and mission are guided by our belief in God and our commitment to the spiritual values we hold dear.

# CHANGING LIVES

Quinn and his siblings were removed from their parent's home at a very young age due to drug and alcohol abuse. It was hoped that the boys could continue to live together, however, due to behavioral challenges they were placed in separate living facilities. Quinn was the oldest and suffered from frequent outbursts of anger due to being taken from his home and siblings. He bounced from placement to placement but finally arrived at Kyle's Place.



Initially, Quinn struggled at Kyle's Place with that same outburst of anger, but the staff was determined to "win" Quinn over. With counseling and the assurance that he is loved, Quinn began to make changes, as did his family. He had many achievements at school, including; making the high school football team, earning defensive player of the year, being awarded student of the month, and receiving the One Dream Overcoming Adversity Award. The best news is that Quinn's parents completed the program requirement for full family reunification with all three boys!

Today, Quinn has graduated from high school and is enrolled in a trade school to study welding. He expressed, "Without KP, I am not sure that I would have made it through those couple of years, it was pretty rough, but I always knew that you would keep me on the straight and that you guys had my back".

# CONTINUUM OF CARE

## TRANSITIONAL LIVING

Recognizing the varied challenges homeless youth face, Kyles Place implements a multi-pronged approach to address homeless youth 14-19. This includes providing a campus-like setting, trauma counseling, and proactive life skills. Our strategy prioritizes safety, structure, belonging, and self-worth, reducing the risks associated with homelessness, such as interactions with the juvenile justice system and untreated mental health conditions. Kyles Place serves as a beacon of hope and a pathway to stability for the youth, enabling them to transition into adulthood successfully.

## DREAM INITIATIVE

The Dream Initiative is designed in collaboration with counselors, administrators, and other stakeholders to unearth the root of the problem creating the failure of students to thrive. The Dream Initiative addresses this issue by providing students with mental health awareness, and coping skills as well as filling their toolbox to navigate the challenges of the life of a teenager.

## OUTREACH AND SUPPORT

Outreach and support programs play a vital role in nurturing the development of our youth. These initiatives provide teenagers with a safe and inclusive space to explore their identities, navigate challenges, and foster positive relationships. Through mentorship, educational resources, and community engagement, teen outreach programs empower young individuals to build essential life skills, enhance their emotional well-being, and make informed decisions.

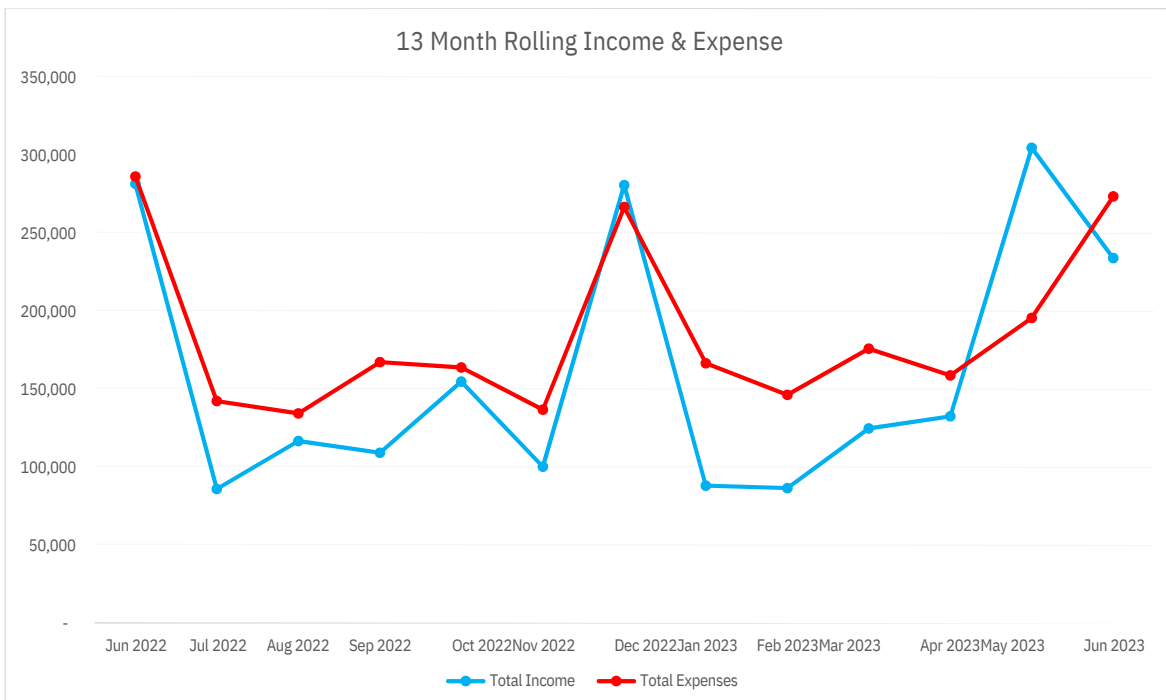
With 20 years of service, and its pioneering spirit, Journey to Dream is still one of the only service providers in North Texas of its kind. JTD offers an extensive continuum of care to hurting, victimized, and homeless youth ages 14-19, including traditional living, trauma counseling, educational and vocational training, outreach and life skills training in addition to providing the necessities of food, clothing, medical care, and safe shelter from the streets.

# STATEMENT OF ACTIVITIES

## THE JOURNEY TO DREAM FOUNDATION STATEMENT OF ACTIVITIES FOR THE YEARS ENDED JUNE 30, 2023 AND JUNE 30, 2022

	Total	
	UNAUDITED 2022	AUDITED 2021
	Jul 2022 - Jun 2023	Jul 2021 - Jun 2022
Changes in unrestricted net assets		
Revenues		
Contributions - unrestricted	688,252	685,981
Event Income (less direct expenses of \$162,899 in 2021 and \$195,662 in 2022)	188,927	212,010
Program Income	666,351	518,096
Loss on Disposal of assets	(57,569)	
In-Kind Income	77,556	88,415
Interest Income	787	1,537
Net assets released from restriction		
Total revenues without donor restrictions	1,564,304	1,506,039
Expenses		
Program services	1,503,354	1,140,713
Management and general	186,757	136,350
Fundraising Expense	240,731	241,154
Total expenses	1,930,842	1,518,217
Decrease in net assets without donor restrictions		
Changes in net assets with donor restrictions	(366,538)	(12,178)
Contributions - with restrictions		
Net assets released from restrictions		
Decrease in net assets	(366,538)	(12,178)
Net assets, beginning of year	858,104	870,282
Net assets, end of year	491,566	858,104

# HISTORICAL TRENDS





# VOLUNTEER PROGRAM DATA

350 INDIVIDUALS AND 30+  
ENGAGED AT 14  
ORIENTATION SESSIONS

4,500 HOURS OF SERVICE  
COMPLETED BY 25+ GROUPS  
AND 200 INDIVIDUAL  
VOLUNTEERS

VOLUNTEER SERVICE WORTH  
OVER \$140,000 TO  
JOURNEY TO DREAM

*\*According to Independent Sector as of April 2023, the value of a volunteer hour is \$31.80*

## HIGHLIGHTS

- KP Cabbies program had 7 active volunteers
- The Way Alliance continues to train and provide valuable mentors for our Kyle's Place teens
- Shop With a Cop was a huge success! By the numbers: 500 volunteer hours; 75 volunteers & 80 police officers
- 5 groups came to decorate Kyle's Place for various holidays
- Through collaboration with the Development and Social Services departments were able to invite 15 volunteer life skills teachers throughout the year
- Gala Committee planned and implemented a successful gala fundraiser event - 40 volunteers and over 100 volunteer hours, including 18 pre-trained registration and checkout volunteers
- 4 volunteers helped teens get driver's education hours
- Each summer we partner with Flower Mound United Methodist Church for summer tutoring. Over the past year they have contributed 150 hours with 12 volunteers doing SAT/ACT prep and gap tutoring plus social activities and back to school clothes shopping.

### **Our Kyle's Place Teens volunteered 404 hours at various community events:**

Peloton of Hope event  
For the Love of Lewisville  
Feed the Hungry  
Shop With a Cop  
Bike With the Blue  
Trinity Presbyterian Dream Garden

## THANK YOU TO THESE COMMUNITY GROUPS AND LOCAL BUSINESSES FOR VOLUNTEER SERVICE:

Ace Handyman  
Angelheart Photo Booth  
Charles Schwab  
Connex Foundation  
Creekwood Christian Church  
Cultivating Kindness Club – Founders Classical Academy of Flower Mound  
Elite Boxing – JAB  
First United Bank – United Day of Service  
Flower Mound High School Football  
Flower Mound United Methodist Church  
Garden Ridge Church of Christ  
Girl Scouts  
Liberty Christian School – SERVE Group  
Many local police departments: The Colony, Denton County Constable’s Office,  
Lewisville, Flower Mound, & Fort Worth  
McAdams Company  
McKinney Bass Club  
National Charity League – Cottonwood Chapter  
National Junior Honors Society @ Shadow Ridge Middle School  
Park Place Cares  
Rockpointe Church  
The Grove Church  
University of North Texas Housing Department  
Way Alliance  
Westside Baptist Church  
Witherite Law Group  
Young Men’s Service League - Integrity Chapter

# JOURNEY TO DREAM EVENTS

## King Metals Invitational

We celebrated the 18th Annual King Architectural Metals Tee Off for Teens Golf Classic in 2023. This annual event provides an opportunity for golfing enthusiasts to come together and compete, prizes, network, and raise funds for Journey to Dream and Kyle's Place. In so many ways Mr. Eddie King at King Architectural Metals is a hero to our teens. Eddie's unwavering commitment to our mission and sponsoring this tournament annually underscores his pledge to make a difference. The event was a blast, with lots of golf, fun activities, great food, amazing prizes, lots of laughter, and great conversations. This event could not take place without the commitment of our sponsors, participants, volunteers, and donors.



## Women on Purpose Luncheon & Fashion Show

In 2023 we brought back the Women on Purpose Luncheon & Fashion Show. This event SOLD OUT in record time, and was a huge success. It was so great to see many women coming together in support of our teens. This event not only raises needed funds, but it is a time of fellowship, friendship and fashion, with lots of great raffle prizes provided by our community business partners.



# JOURNEY TO DREAM EVENTS

## Annual Gala

What an incredible night! The 2023 Flappers and Dappers Gala was held on June 17, at the Hilton Garden Inn, Lewisville, TX. Back “by popular demand” we danced and partied to a roaring twenties theme. VIP guests were treated to a special Speakeasy experience with passed appetizers, a signature drink, a hand rolled cigar and a live jazz singer. Other attractions of the evening included a Whiskey Toss, Jewelry Pull, an extensive Silent auction, and a live auction full of travel packages to destinations including Tuscany, Sonoma, and Mexico. The keynote speaker for the evening was former pro football player Michael Oher. Michael shared his story of homelessness and survival to success and giving back. We would like to thank all the sponsors, donors, and attendees that helped make the gala a success. The gala is a critical part of our funding that provides shelter, basic essentials and various support services to teens in our community.



## Shop with a Cop

In 2022 we celebrated our 10th Annual Shop with a Cop event. We are so grateful to all the Police officers, donors, sponsors, volunteers, community partners, and our tireless staff for a successful and magical event. This year 115 teens were nominated by their school counselors, paired with a Police Officer, and given a \$150 gift card to go shopping at Target! The night was capped off with a BBQ dinner, gift wrapping, and dancing with some local heroes. Shop with a Cop could not happen without our Police Officers and community partners. What a true blessing!



# COMMUNITY SPONSORED CHARITY EVENTS

## Lantana Ladies League

The Lantana Ladies League, a group of ladies that enjoy volunteering, supporting and having fun in our local community, have been a big supporter of Journey to Dream for several years. In 2023, they held a purse auction and presented Journey to Dream with an \$18,000 check from the sale of purses.



## Eat, Drink, & Be Giving

The Walker-Clark Family host an annual event benefitting a local charity. In 2022 they chose Journey to Dream as their spotlight organization. This event is held in an airplane hangar and attendees are requested to “be giving”. It was a great night of good food, good music and great giving. This event raised over \$20,000 in support of Journey to Dream. We are humbled by the giving at this event.



## Bike with the Blue

The Flower Mound Police Department goes above and beyond in serving their community. Their Annual Bike with the Blue event, which supports Journey to Dream, is a testament to this. They collaborate with volunteers, vendors, and sponsors from all over the community to create an enjoyable day for everyone. This year’s event was no exception; they worked hard to plan and execute it. The Flower Mound Police Department presented Journey to Dream with a generous check of almost \$14,000. We are grateful to everyone who helped make this event a success.



## DONORS BY GIVING LEVEL (\$20,000+)

City Of Lewisville  
Committed to Healthy Meals  
Ron & Susan Crowell  
Stanley E Fulton  
King Architectural Metals  
Hiram and Kenda Lopez  
Westside Baptist Church

## DONORS BY GIVING LEVEL (\$10,000 - \$19,999)

Charles Schwab Foundation  
Craig Christensen  
Cross Timbers Rotary Club Charities, Inc.  
Flower Mound Citizen Police  
James Avery Craftsman  
Lauren Jones  
Lantana Ladies League  
Kristi Raney  
The RAO Foundation  
The TJ Maxx Foundation  
Toyota Motor North America  
Urban Air Adventure Park  
Witherite Law Group

## DONORS BY GIVING LEVEL (\$5,000 - \$9,999)

Aramark  
ARW Systems DBA Viyu Network Solutions  
Linda Barick  
Scott Bates  
Penny Beaman  
Linda Bird  
Terry Brittian  
Paul Clark  
Comerica  
Communities Foundation Of Texas  
David & Debbie Confer  
Tami Creeser  
Paul Dietzler  
Monty Felts  
Mark & Judy Graft  
Nesa Grider & David Hoagland  
Jim Adler & Associates  
John R McAdams Company  
Shawn Knowles  
Lamb of God Lutheran Church  
Cyndi & David Little  
David Marks  
Matthew 6 Ministries  
MDRT Foundation  
Danita & Reggie Rembert  
Glen Smith  
Marci Stancoff  
The Henry Foundation  
David & Anita Thiede  
Town Of Flower Mound  
Wendy Turner

## DONORS BY GIVING LEVEL (\$1,000 - \$4,999)

Ace Handyman Services - Coppell	Flower Mound Rotary Club	NBC 5
Jessica Agee	Flower Mound United Methodist Church	North Point Christian Church
Alert Response LLC	Derek France	Once Upon a StoryBook Studio
Alpha Kappa Alpha Sorority, Inc.	Kim Francis	Ravain Owens
Amazon Smile	Chris Gomes	Thomas Peck
Christy Arnold	Grapevine Church Of Christ	Pledgeling Foundation
Ash Grove Charitable Foundation	Grapevine Giving	Point Bank
Atmos Energy	Judith Grelich	Olivia Ponce
Kristin Baker	Steve & Vickie Griffith	Brandon Quigley
Norma Barker	Ricky Grunden Sr	Seshu Rao
Roslyn Barker	Ellen Hakala	Brian & Mary Riley
Renata Basinger	Josh Haker	Fred Robinson
Kenneth Beam	Charles Haley	Duane Roquemore
Derek Bechtel	Michael Handal	Larry Rose
Twyla Beckham	Amy Harp	Tom Rowe
Bent Tree Bible Fellowship	Carol Harper & Joe Junger	Bridget Russell
Caroline & Steve Berend	Robert Hart	Scheels All Sports
Bistecca	Chris & Laura Hatton	Gary Sims
Juanyta Bradley	Helping Hands for Little Hearts	Ketra Sims
Bridal Boutique Lewisville, Inc.	Derek Hendrix	Vince & Samantha Sims
Lindsey Burns	Jack Henkle	Tracy Slade
Edora Butler	Highland Village Womens Club	Spiritual Assembly of the Baha'is of
Michael & Liese Canterbury	David Hinderland	Highland Village, Texas, Inc.
Nicki & Shannon Carr	HMH Lifestyles, LP	Stonebriar Country Club
Chip Carter	Kathy Hodges	Amy Strange
Castlewoods Swim Club	Huffines Chevrolet Lewisville	Carol Stringer
Josef Christman	Marcia Hutchinson	Ryan Sullivan
City Of Highland Village	Deidre Hutton	Ericka Tapper
Merry Clark	Insperty	Target Foundation
Tracey Cline	Institute for Creation Research	The Meadows Foundation
Chris Cloutier	Daniel Johnson	Robert Thomas
CNW II Flower Mound, LLC	Amy Judd	John & Janis Tilley
Robin & Kenneth Colley	Melissa & Matt Kamplain	Kelton Todd
Laure Cordell	David Karcher	Triangle Community Foundation Inc
Cowboys Golf Club	Joe Kaye	Trinity Presbyterian Church
Angie Cox	Elaine Kinnee	Constable Michael Truitt
Cox Cleaning LLC	Linda Kirchhoff	Spencer Turner
Cross Timbers National Society of the	John Kohlschein	Jonathan Tyree
Daughters of the America Revolution	Lewisville Noon Rotary Club	Blaine Udell
Amy Culak	Sydney Lunsford	Amy Vanderoef
Ryan Curran	Market Street	Brandon P Vanmeter
Julie & Ben Davenport	Joe Marshall	VanMeter Family Donation Fund
Carly Davis	Dan May	Scott Vehslage
Cathy H Davis	Gaylynn McBrayer	Walmart Community Grant
DFW Metroplex AKA Founders Day committee	Karen McCoy	Charles Walton
Robert Dollak	Dennis McInerney	Weaver and Tidwell Private Foundation
Marshall Embry	Wade Mellick	Woodrow Williams
Erb Family Wellness - Coppell	John Mercer	Erin & Christian Winter
Meaghan Evanich	MIAMAYE LLC	Scott Wojcik
FCAFM Cultivating Kindness	Kenneth Migden	Women Trophy Club
Neville Fernandes	Peter Miller	Women's Real Estate Investment Network
First United Methodist Church	Modern Woodmen of America	Tiffany Wright
Flourish Flower & Gifts	National Christian Foundation North Texas	



## DONORS BY GIVING LEVEL (\$500 - \$999)

Gonzalo Almendarez  
Argyle ISD  
Angela Banuelas  
Gregory Bates  
Christine Baum  
Bridgeway Church  
Charla Brown & Shane Summers  
Natalie Burkhalter  
Brian Butler  
C.S. Creations & Events  
Stacey Campbell  
Angela Campbell  
Will Carlton  
Melanie & Charles Carr  
Jason Case  
Katie Chen  
Dan & Dale Cole  
Dr. Shelley Connell  
Cathi Coridan  
Charles Crabb  
DFW Nonprofit Resource Group  
Greg Dykes  
El Rincon  
Exxon Mobil  
Rob Felt  
Fidelity Investments  
Saundra Fitzgerald  
FM Lady Jag Softball Booster Club  
Kelly Foltz  
Darla Fuller  
Amanda Furman  
Byron Galloway  
Steve Gamel  
John Gillespie  
L. Charles Green  
Waymond Harris  
Kendra Hinderland  
Honest 1 Auto Care  
Becky Hornback  
Independent Financial  
Maitri Johnson  
Stacey Judd  
Kaleidoscope  
Glenn Kimball  
Georgia Kimble  
Knockouts Haircuts  
William Labutta  
Larissa RS Group plc  
Lewisville Farmers Softball Booster Club  
Lisa Lingenfelter  
Marney Macha  
Lucinda Mackinnon  
Paul Maletic  
Christine Marquise  
Vickie Marriott  
Christopher Marris  
McGuinness Dermatology  
Michelle McWaters-Smith  
Menasha Corporation  
Mark Middlebrooks  
Anna Miller  
Cynthia Minchillo  
Mary Ann Mrozek  
Jill Nelson  
Winston Nelson  
Kevin Owens  
Darrell Pattillo  
Peloton of Hope  
Quentin Peterson  
Araceli Quezada  
James Darien Rentfro  
Whitney Salas  
Melissa Saunders  
Kathryn Sexton  
Maria Cordileone Silva  
Sparrow on Main  
Chaplain Rich Stoglin  
John Stollenwerck  
Nora Stout  
Texas Instruments  
Kelly Thien  
TNMP  
Total Wine & More  
TransUnion  
Trietsch Memorial United Methodist Church  
Shirley Updike  
Elizabeth Veazey  
Teresa Weaver  
Robert Whelton  
Brent Williams  
Brett Williams  
Nancy Wright  
Krystal Yates  
Zeta Phi Beta Sorority

## DONORS BY GIVING LEVEL (\$250 - \$499)

Susan Allen	Gabriela Camargo-Shirley	Brooke Minteer
Ameriprise	Landon Gann	Brend Mitchell
Debra Anderson	John Gardiner	Commissioner Bobbie Mitchell
Andrea Dickson Orthopedic Associates	Mitch Gassaway	Jessica & Brent Moore
Angelheart Photobooth	Joel Gendron	Rich Wayne Murchek
AT&T	Kimberly Ann Ghedi	Brooklyn Nelson
Jim Attrell	Sharon Gillespie	Villette Newswanger
Starship Bagels	Christina & Dennis Goudy	North Texas State Fair Association
Mitch & Amber Barbour	Monica L Grider	Daniel Ostrow
Steve & Kathryn Barns	MK Gustafson	PayPal
Cassandra Bartlett	Chadney Haft	Bill Priakos
Lori Baucum	Melissa Handley	Araceli Quezada
Allison Beaver	Megan Hatcher	Allison Quisenberry
Renuka Bhandari	Kathy Haule	Greg Rimling
Laura Bowers	Heather Miller Photography	Rachel Roberts
Melissa Ann Brand	Alicia Hemphill	Tina Safai
Sallie Brigance	Kristopher Hendrix	Sam Pack's Five Star Ford Lewisville
Nicole Brown	Mariauna Hernandez	Prudence & Monette Sanchez
James Bryan	Andrew Herrmann	Nick Scrivens
Mark Bryant	Kathy Hicks	Shadow Ridge Middle School
Buckets & Bows Maid Service	Aaron Hope	Ralph Shelton
Zachary Burks	Gerard & Diane Hudspeth	Skydive Spaceland Dallas
Melinda Carter	Rand Huguely	Robert Small
Monika Cody	Jen Jones	James Smith
Trent & Emily Coleman	Robert Kenyon	The Drip Bar
William Collins	Scott Kirkpatrick	Marisol Timm
Corky's Gaming Bistro	Kroger Southwest Community Rewards	Eren Turner
Susan & Richard Coronel	Lantana Golf Club	Vista Ridge United Methodist Church
DATCU	Gerald Leeseberg	Stan Walker
Chris Daughtery	Kay Lewis	Ria Wallmann
Dell	Linda Lindsey	Annette Walters
Shelly Dodge	Love Thy Neighbor	Sherry White
Double Oak Women's Club	Jeffrey Lowenstein	Brian & Tisha White
Shirley Durbin	Penny Mallet	Crystal Wilder
Barbara Edstrom	Angela Manuel	Nicole & Tony Wragge
Ellie Mental Health - Plano	Ashley Mayberry	Telena Wright
Erb Family Wellness - Southlake	Julia Mayes	Kalee Wulfers
Family Ties Sunday School	Dawn Maynor	YMSL Integrity
Heather Feeny	Athaliah McGee	Steve Zeigler
Lori Fickling	Stacey Miller	Patricia Zvonar
Cindy & Brian Flom	John Miller	

## DONORS BY GIVING LEVEL (\$25 - \$249)

407 Gun Club	Laranda D Eakin	Gregory Leblanc	Edward Robinson
Susan Aarni	Edible Arrangements	Landon Ledford	Roma's
Abbott Labs	Jennifer Edwards	Willie Lees	Paul Rosenberger
Cheryl Ablon	Aaron Douglas Edwards	Carol Leverette	Danielle Rosencrans
Isabel Adamiak	Erich Ehle	Irene Leverette	Kelly Ross
Sandra Agosto	Shelly Einspahr	Brian Levin	Deborah Dean Rowlett
Laura Alexander & Taylor Reyes	Lauren & Kyle Etter	Suzanne Lewis	Sarah Ryan
Ashley Alford	Tori Eubanks	Cerita Loftis	Matthew Sanders
American Eagle Outfitters	Timothy Fahey	Jessica Lott	Craig Scheef
Matt Anderson	Stacy Faivre	Ron & Leslie Lowery	Mike & Shelley Schnittker
Melanie Anderson	Cynthia Farar	Lorrie Loy	Seacret
Verity Burk & Paitlyn Anderton	William Farr	Della Lubke	Chris Sells
Sandra Annette Gipson	Lori Denise Farr	Wayne Luciano	Katherine Sells
Apricot Lane Boutique - Denton	Don File	Mark & Becky Lundborg	Joy Setzer
Dallas Arboretum	Fish City Grill	Kimberly Lyons	Manu Shahi
Edmond Archer	Tiaja Fletcher	Craig & Mamey Macha	Jennifer Sharp
Berdie Archer	Flower Mound High School - StuCo	Marilyn & Terry Maguire	Jacqueline Shaw
Peyton Armistead	Clayton Flurry	Robin Mainer	Patricia Davis Sherman
Roger Badchkam	Fogo de Chao	Mainstream Boutique	Ty Shriver
Sarah Bailey	Tawnya Ford	Rawlin Mallet	Lexi Shrum
Linda Baird	Thomas Frank	Tina Malmberg	Sandy Shuda
Alex Bannister	Spencer Franklin	Cissy Martin	Emily Shugars
Collette Barbosa	Chevelle A Freeman	Alexsandra Martinez	Debbie Simon
Sharri Barcherding	Jaime Friswold	Carrie Martone	Sandra Sims
Jan Belcher	Misty Fulgencio	Trent Massey	Katina Singleton
Mary Belken	Melinda Galler	Ashley Mathis	Bette Sirianni
Amy Bell	Emily Gancy	Alicia Mathney	Kathy Sisco
Kari Bell	Alda Garrett	Mattito's	Nicole Smith
Luis Benitez	Cindy & Gary Garrett	Patricia Mauro	Doris Smith
Travis Bennett	Demris Garrett	Megan Maus	Ingrid Bornheimer Smith
Beth Bernas	Brian Gasperson	John Maxwell	Candace Snyder
Nathan Berryman	Cindy & Mitch Gassaway	John Mcanalley	Connie Squiers
Shane Birchfield	Micah Gautreaux	Katie McBride	William Squiric
Danielle Bird	Tony George	Sandy McCoy	Steven Stanley
Tenisha Blair	Doc Gibbs	Leticia McCray	Neal & Lesleigh Stephens
Blossom Valley Academy	Vera Gibbs	Zac & Sarah McDaniel	Ron & Carol Stewart
Bob's Steak & Chop House	Girl Scout Troop 5639	Devon McGowan	Yvonne Stewart
Weldon Bonner	Lori Gladstone	Mel's Barber Shop	Kellie Stokes
Tricia Borchardt	Paula Godwin	Luke Mergerson	Breanna Stone
Marilyn Bowie	Sandra Gonzalez	Angela Merridy	Theresa Van Strien
Pamela Boyd	Pedro Gonzalez	Messina Hof Bryan Estate Winery	David & Natalie Sublett
Rachel Bracey	Heather Good	Ken Metcalf	Josh Sudbury
Ann Bradbury	James Goodman	Mi Cocina	Sutera Spa
Michael Braun	Stephanie Gorman	Microsoft Rewards API	Melinda Taylor
Ann Brice	China Island Grill	Suzanne Miller	Rachel Taylor
Brightside Boutique	Ashlyn Grobman	Camille Stearns Miller	Lee & Tina Taylor
Sharlene Brittian	Teresa Grundstrom	Carolyn Moll	Cherita Taylor
Eli Brodrecht	Kelley Hagans	Terri Monk	Ronald Taylor
Beatrice Brown	Stephanie Halford	Philip Monnig	The Horses Axe
Joyce Brown	Monique Hamons	Frankie Lynn Moon	The Row House
Dwan Bryant	Hand & Stone Massage & Facial Spa	Lisa Moore	Keith Thomas
Mildred Buchanan	David Hanna	Dale & Christa Mumma	Joane Thompson
Chris & Kyle Burdick	Evelyn H Harper	Nathan Murray & Elena Bach	Three Dog Bakery
Ollie Burks	Beth Hayes	Raj Nair	Kamre Timmons
Frances Cade	Emily Haynie	Jodie Napier	Tisbest Philanthropy
Cardinal Health	Jeff Hedrick	Shari Nathanson	Sarahi Tringali
Grace Carleton	Camille Heller	National Charity League NCL Cottonwood Chapter	Michael Truitt
Susan Cartmill	Todd Hemphill	Kassandra Nordhoff	United Way of Denton County
Kent Casey	Melissa Hentschel	Nordstrom	Isabelle Vanlerberghe
Scott Cato	Angela Hicks-Merridy	Nothing Bundt Cakes Flower Mound	Sally Jacoby Veazey
Rachel Cavanaugh	Hilton Inn & Suites	NOYB Creations	Verfs
Ousley Vision Center	Jeannine Spiller Hisey	NXT Mortgage Company	Janet Vincze
Sandra Chalupka	David Hodges	Old Hag's Pizza and Pasta	Irene Vivanco
Cinnamon Creek Ranch, LLC	Jill Hollis	Emily Parchman	Todd Wagner
Greg Clark	Kim Holzwarth	Alice Carole Parker	Mary Wagner-Wilkins
Samantha Clark	Linda Hooper	Shital Patel	Tiffany Waisanen
Bruce Clark	Kamie Hope	JoAnne Pemberton	Maddie Walker
Rita Clausen	Laverne Hopson	Pepsico	Patricia Walker
Wendy Cloud	Claudia Horikawa	Perot Museum	Zach Walker
Club Pilates	Kathy Hummell	Tony Pesina	Frances Walker
Wendy Coghlan	Sharon L Hunter-Lindsey	Donna Peters	Andre Baldanza & Marcie Wallace
Rebekah Cole	Brenda Hurtado	Audrey Pickel	Julie Watson
Sharon Coleman	Bob Hurtt	Jess Pierson	Shelby and Tracy Waychoff
William Collins	Lauren Ingram	Cindy Ping	Michelle Weisbein
Christine Conwell	Paul Ingram	Robert Pipes	Kim Whitaker
Roni Cook	Isla & Co.	Jonathon Pirpich	Geresha White
Coppel Middle School North	Beverly Ivy	Jaime Plank	Joyce White
Primoris Service Corporation	Mary Jacoby	George Platt	Freddie Whitfield
William Courtney	Steven Jodie	Kathy Platt	Lisa Wiggins
Gary & Kimberley Cramer	Ian & Heidi Johnson	Donna Pockrus	Charlotte Wilcox
Eric Crane	Jason Johnston	Jeffrey Potter	Wild Birds Unlimited
Cheryl Crawford	Robert Wayne Davis, Jr.	David Price	Katherine Williams
Crumbi Cookies	Jody Kemp	Prime Farm to Table	Emma Wilson
Kelly Dadabo	Jenna Kirkpatrick	Profound Microfarms	Lori Wolfe
Jeffrey Darnell	Michael Kirkpatrick	Viji Rajagopal	William Wolter
Evan & Hannah Davis	Rashid Kiwanuka	Preston Ray	Ron & Anne Womack
Karen E Davis	Craig Kniffen	Taylor Ray	Nicole Smith Woodard
Mike Deford	Tracy Kniffen	Elizabeth Reed	Matt Wooster
DFW Breakroom Vending	Erin Kuiper	Denise Regina	Trey Wright
Jodie Dibble	Shreya Kumar	Allison Michelle Reid	Rosemary Wright
Keith Dickerson	Amy Kushnr	Lindsay Reyes	Written by the Seasons
Amy Dillon	Joyce Lacefield	Clayton Riggs	Lasheila Yates
Kelsey Disch	Kelsi & Ryan Lamberth	Laura Riley	Toni & Merrill Young
Andrea Dorsey	Gala R Langley	Walter Del Rio	Z Zurich Foundation
Chad Dunaway	Laura Lansmon	Greg Ritter	Robyn van Zandt
Brad Durden	Deka Lash	Dawn Robbins	Ebony Zavala
Harry Durstine	Nico Law & Rayford Henslee	Sarah Roberts	Courtney Zehnder

# BOARD OF DIRECTORS

Angie Cox,  
President

Brandon Vanmeter,  
President-Elect

Billie Cantu,  
Secretary

Nathan Berryman,  
Treasurer

Chris Hatton,  
Past President

Olivia R. Ponce

Manu Shahi

Brian White

Thronn Hicks

# ADVISORY COUNCIL

Rick Blackstock

Jenny Gomez

Pam New

Cathey Brown

Eddie King

David Nordyke

Bo Brownlee

Valerie Lengel,  
LMSW

State Representative  
Tan Parker

The Honorable  
Andy Eads

The Honorable  
Kimberly McCary

Kari Rusco

Michelle French

Commissioner  
Bobbie Mitchell

Kim Hinkle-Smith