

THE DREAM NEWS

JOURNEY TO DREAM

MY WHY

Recently, I asked our leadership team to prepare their "WHY" statement to be published on our website.

Your why is your purpose in life, the driving force that keeps you going when times get hard and keeps you diligent when things are going well. Everyone has a different way, although there are several common threads. Love, success, legacy, and security are just some of the main things people might articulate as their why. Your why might be obtaining financial independence or finding a job that enables you to travel the world. It could be seeking meaningful relationships or pursuing your ambitions. Perhaps it's looking at life with a sense of humor or focusing on helping those in need. No matter what it is, it can serve as your North Star—a central guiding principle to help you make both everyday and enormously consequential decisions.

Undoubtedly, each of our statements reflected a clear sense of purpose and focus on what matters most, compelling us to take risks and push forward regardless of the odds and obstacles to be difference-makers for the youth of tomorrow.

What is your why?

NESA GRIDER
Chief Executive Officer



WHAT'S INSIDE

By The Numbers
[PAGE 2](#)

Kyle's Place Highlights
[PAGE 2](#)

Development Team
[PAGE 3](#)

School Programs
[PAGE 3](#)

Volunteer Victories
[PAGE 4](#)

Where Are They Now?
[PAGE 4](#)

Employee Corner
[PAGE 5](#)

Upcoming Events
[PAGE 5](#)

BY THE NUMBERS

Referral to Kyle's Place

215

Nights of Warm Beds Provided

1,332

Healthy Meals and Snacks Served

1,545

Transportation

1,369

Physical and Mental Health Appointments

265

Life Skills Classes

1,857

KYLE'S PLACE HIGHLIGHTS



In August we had one resident placed in a foster to adopt home.

One of our older teens was able to reunite with his biological mom.

Everyone headed back to school in August complete with haircuts and school supplies thanks to generous donations.

We have two football players, one in color guard and one cheerleader!



We had one teen visit Disney World with PAL and another go to a Harry Styles concert with her mentor.

One of our teens flew in an airplane for the first time!

We've had a great partnership with Flower Mound United Methodist Church who have sponsored numerous outings, shopping trips and facilitated life skills classes.



Four residents were baptized at BridgeWay Church.

DEVELOPMENT TEAM

We had numerous groups hold fundraisers benefitting Journey to Dream and Kyle's Place.

We raised over \$10,000 during NTX Giving Day.

We had an amazing supporter that provided funds for all our teens at Kyle's Place to get school clothes.

We received various grants supporting Journey to Dream & Kyle's Place.

The Flower Mound Police Department presented us with a \$20,000 check for their Bike with Blue Fundraiser.

Thank you community members for all of the support!



SCHOOL PROGRAMS

The school program started back in late August of 2022 with one school.

- Lewisville Main high School

Expanded to all 5 campuses by Mid September.

- Killough, Hebron, North Collegiate Academy-Lewisville Campus, Durham

Added two new campuses

- Hebron 9th Grade Campus, North Collegiate Academy-Little Elm Campus



300+
STUDENTS
SERVED



Our Journey to Dream volunteer program had a re-birth this quarter! We said goodbye to Jessica Pool and welcomed Erin Winter as our new Community Engagement Director. We have seen a renewed interest, post-pandemic, in volunteering and engaging with JTD and our teens. Erin has revamped the program to increase engagement and opportunities for the community while also meeting the needs of our organization.

Please reach out if you would like to volunteer but have not yet heard from us. We would love to have you!

VOLUNTEER VICTORIES

114 volunteer contacts engaged

Band communication app implemented

718 volunteer hours reported

Streamlined volunteer orientation

6 new volunteer categories

1. JTD Reps
2. JTD Ambassadors
3. KP Crew
4. KP Cabbies
5. KP Sparks
6. Dreamers

WHERE ARE THEY NOW?

Katie had been an adoptee, a runaway and a foster child when she came to us at 16 years old. She was too old to expect to get adopted and just wanted to finish high school and go to college. Her goals were to prove to everyone that she could be a success. After 10 months with us a family came forward to adopt her. She immediately said "Yes!" And five months later the adoption was finalized. She had her forever family just before turning 18.

With an outgoing personality and a contagious smile, she made many friends, graduated high school and prepared to attend college. In the meantime her family prepared to move to Florida. Katie chose to stay behind. As is the case with most young adults from foster care the transition was hard. She moved in with her boyfriend, worked a full-time job and attended counseling sessions to work through the trauma, but her relationship with her family became strained. Due to some skills she learned in care she recognized the signs of domestic violence while living with her boyfriend and decided it was time for a change.

After reconnecting with her family, who sent her a plane ticket home, she reached out to her former case worker at Kyle's Place. The two of them worked to pack her up and get her safely on the plane to her family. Since rejoining her family, she has thrived. She is pursuing her dream of a photography career, is in a new relationship, and is enjoying the support of a family, something she spent most of her teen years without.

We are so proud of you Katie!

EMPLOYEE CORNER

BIRTHDAYS

Hydeia	07/25
Laura	08/03
Faith	09/25
Alicja	09/16

ANNIVERSARIES

Sharon	07/24/2017
Nesa	09/01/2017
Anita	07/01/2016
Ravain	08/27/2018

NEW HIRES

Hydeia	09/09/2022
Jennifer	08/22/2022
Aspen	07/18/2022
Chandler	09/12/2022
Faith	09/09/2022
Alicja	09/22/2022
Orlando	09/08/2022
Erin	08/10/2022

UPCOMING EVENTS

SHOP WITH A COP

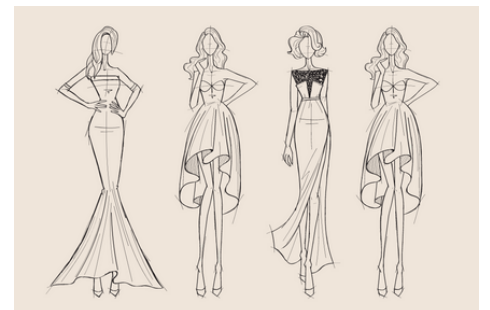


Thursday, December 15, 2022

4:30 p.m. - 9:00 p.m.

Next Steps Center
1305 State Highway 121
Lewisville, TX, 75067

WOMEN ON PURPOSE LUNCHEON & FASHION SHOW



Thursday, March 9th, 2022

11:00 a.m. - 2:00 p.m.

Sparrow On Main
105 E. Main Street
Lewisville, TX, 75057